



Merlin Database Easy Full Copy/Replace Update Procedure.

Procedure for user's to follow to update by copying and replacing an old MerlinCE database with a later database copied from USB Memory Stick or Downloaded from the Website.

This procedure when followed correctly will update the main merlin database 'CQDB1_3_0_1.sdf' using copy and replace method to **over write** the existing database with a copied database from:...

1. **Method 1 - Download from PPG website.**
2. **Method 2 - USB Flash Disc**

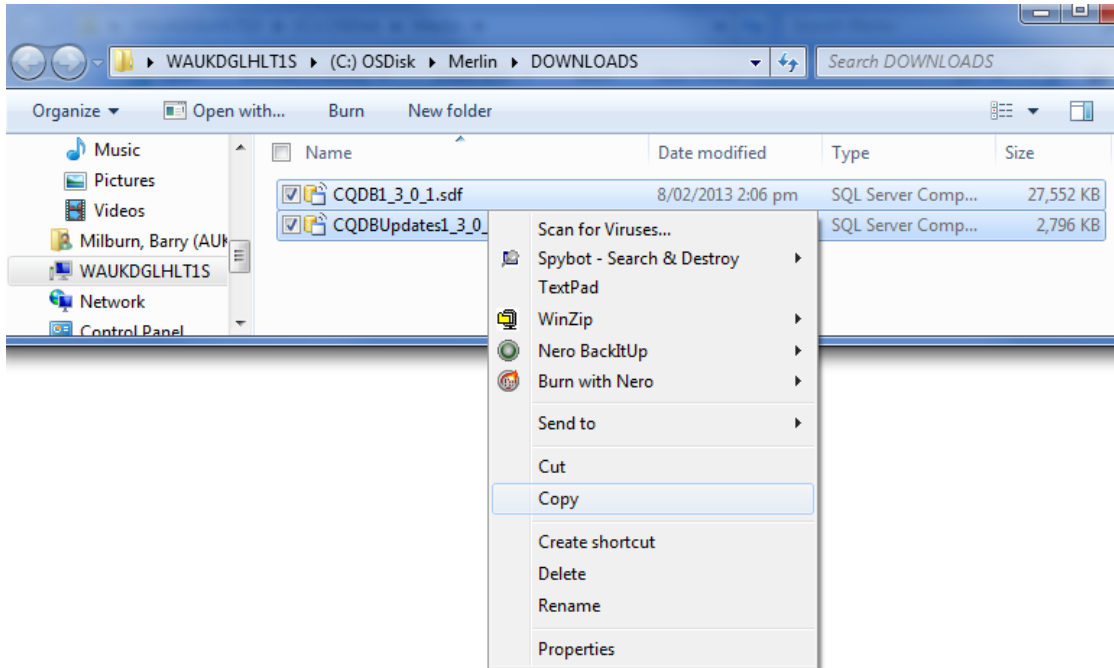
Method 1 – Download From Website Database Files & Then Use Copy & Paste Method

1. Download the database files from the PPG Website using the **MerlinDatabaseUpdater.exe**. Run the application and select '**1. Get Updates**' this will download the two database files '**CQDB1_3_0_1.sdf**' and '**CQDBUpdates1_3_1_0_1.sdf**' to the file location '**C:\Merlin\DOWNLOADS**'



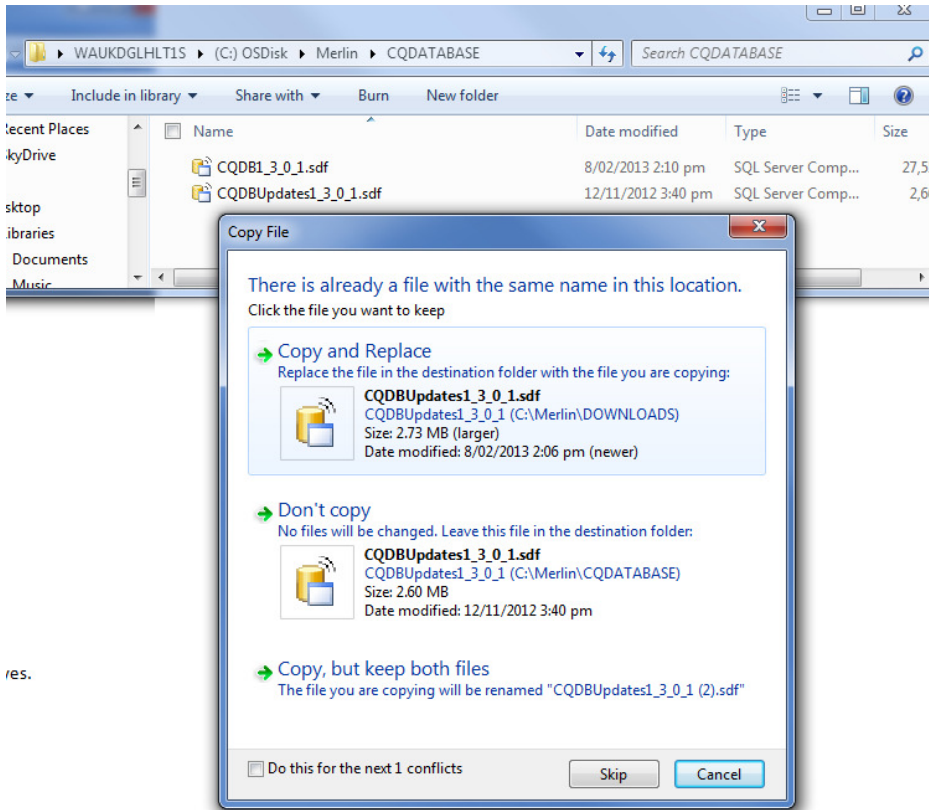
Quit MerlinDatabaseUpdater application as you do not need to use '**2. Inspect Files**' or '**3. Apply Updates**' as you are doing a full replacement using a manual file copy and replace method using the downloaded files the application has just retrieved.

- Open the folder C:\Merlin\DOWNLOADS\ and select the two database and right mouse button click and select 'Copy' from the dropdown menu...



- Open the folder in C:\Merlin\CQDATABASE

4. Paste the two database files into the folder, you will be prompted to over write the existing files.....answer yes.

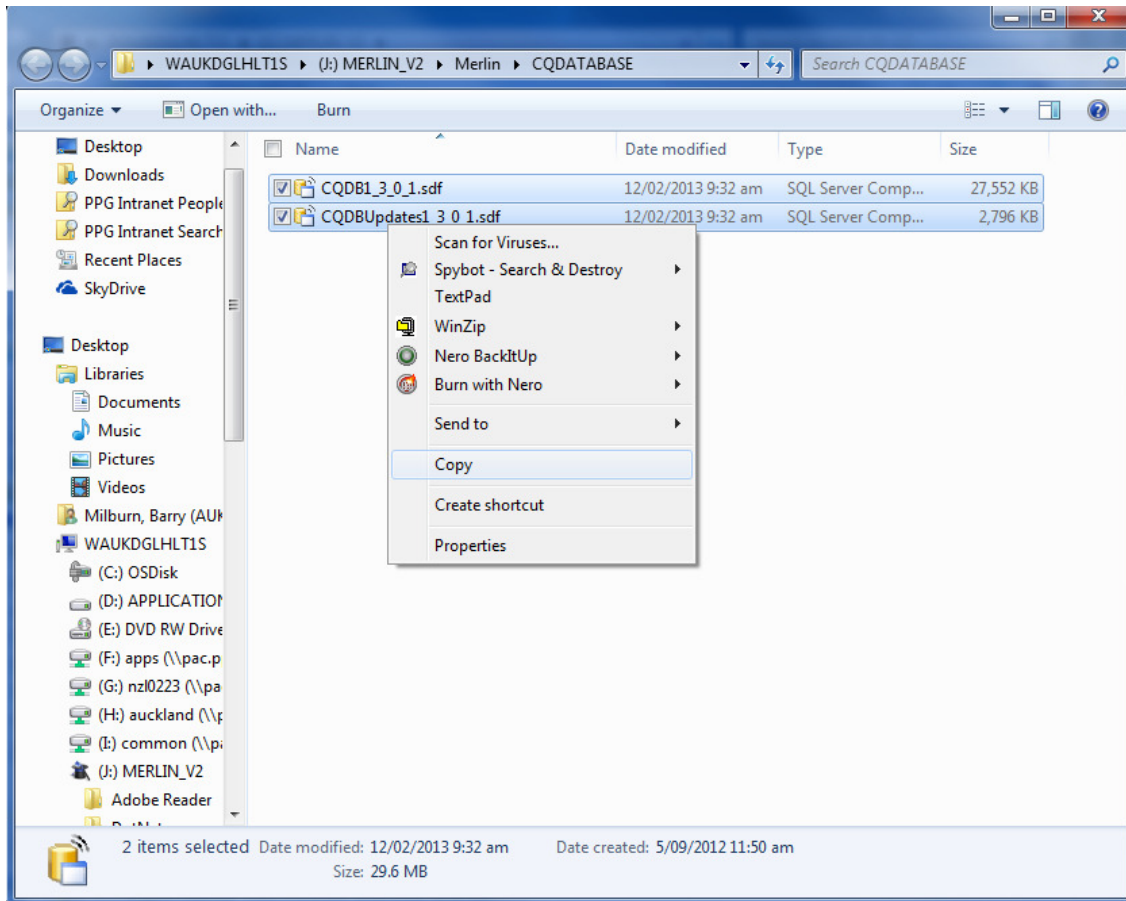


res.

This completes the update process, Merlin Customer edition is using the latest database you copied to the Merlin\CQDATABASE folder.

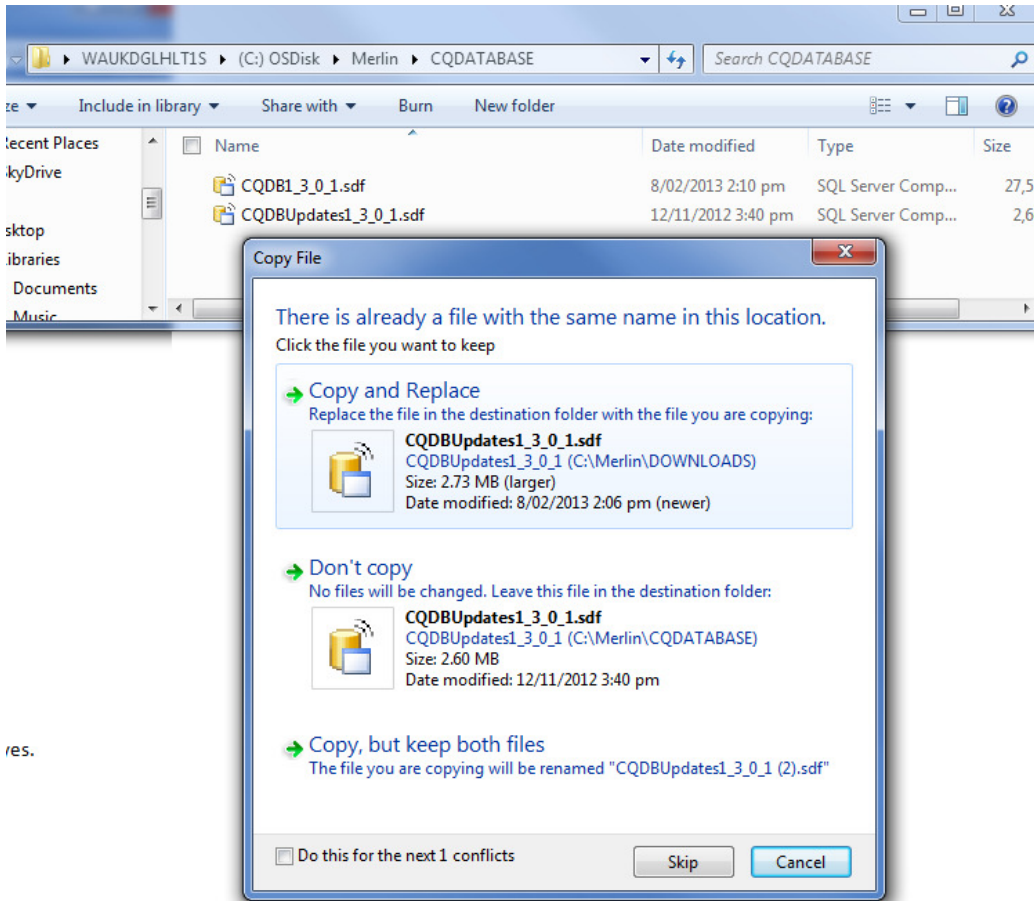
Method 2 – Copy from USB Memory Stick and Then Use Copy & Paste Method

1. Insert your USB Memory/Flash Disk containing Merlin Customer Edition Installation files. The drive letter may vary depending on how the computer allocates the next available drive letter. In this example the USB Flash Disk is drive 'J:'.
2. In Windows explorer navigate to the file location J:\MERLIN_V2\Merlin\CQDATABASE and select the two database files and right mouse button click and select 'Copy' from the dropdown menu...



3. Open the folder in C:\Merlin\CQDATABASE\

- Paste the two database files into this folder, you will be prompted to over write the existing files.....answer yes to the prompt.



res.

This completes the update process, Merlin Customer edition is using the latest database you copied to the Merlin\CQDATABASE folder from the USB Flash Disk.